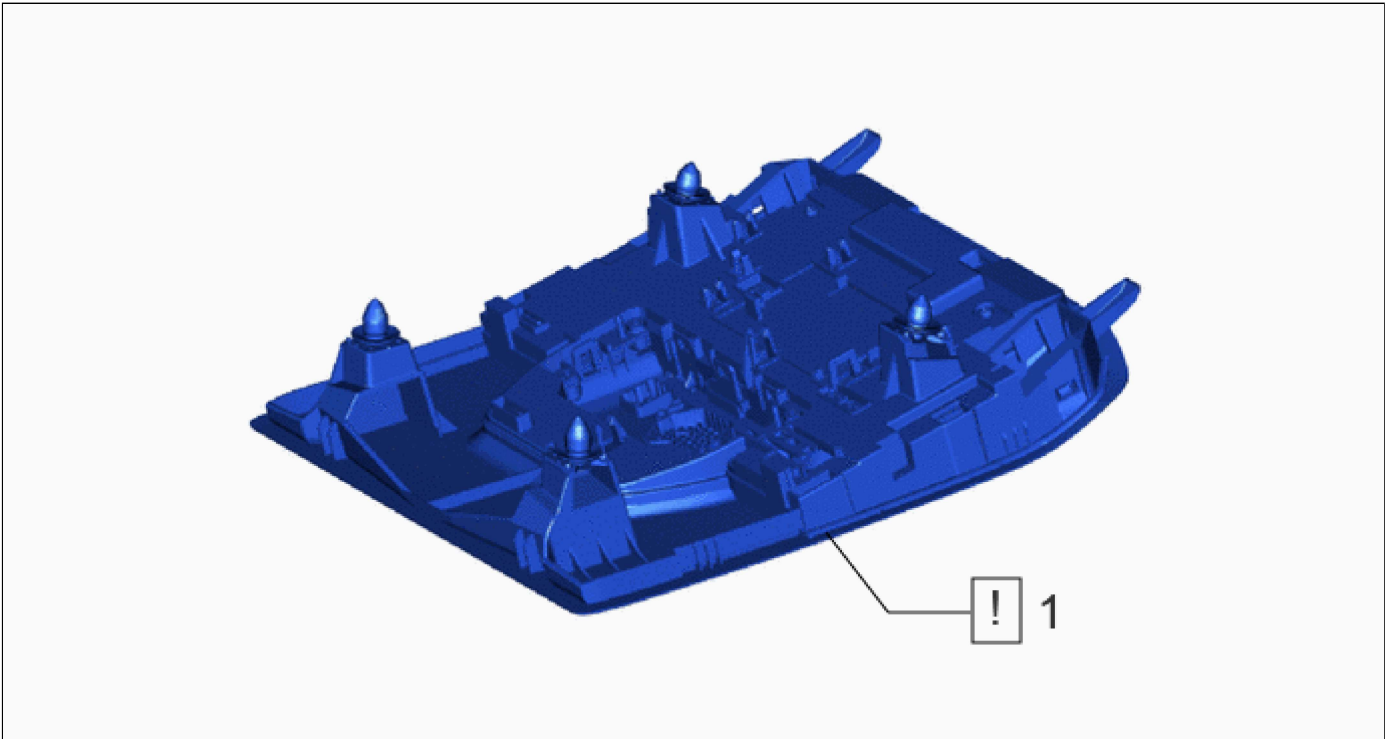






Last Modified: 07-05-2024	6.11:8.1.0	Doc ID: RM100000002JQ8E
Model Year Start: 2024	Model: Land Cruiser	Prod Date Range: [02/2024 -]
Title: LIGHTING (INT): PERSONAL LIGHT: REMOVAL; 2024 MY Land Cruiser [02/2024 -]		

REMOVAL

CAUTION / NOTICE / HINT

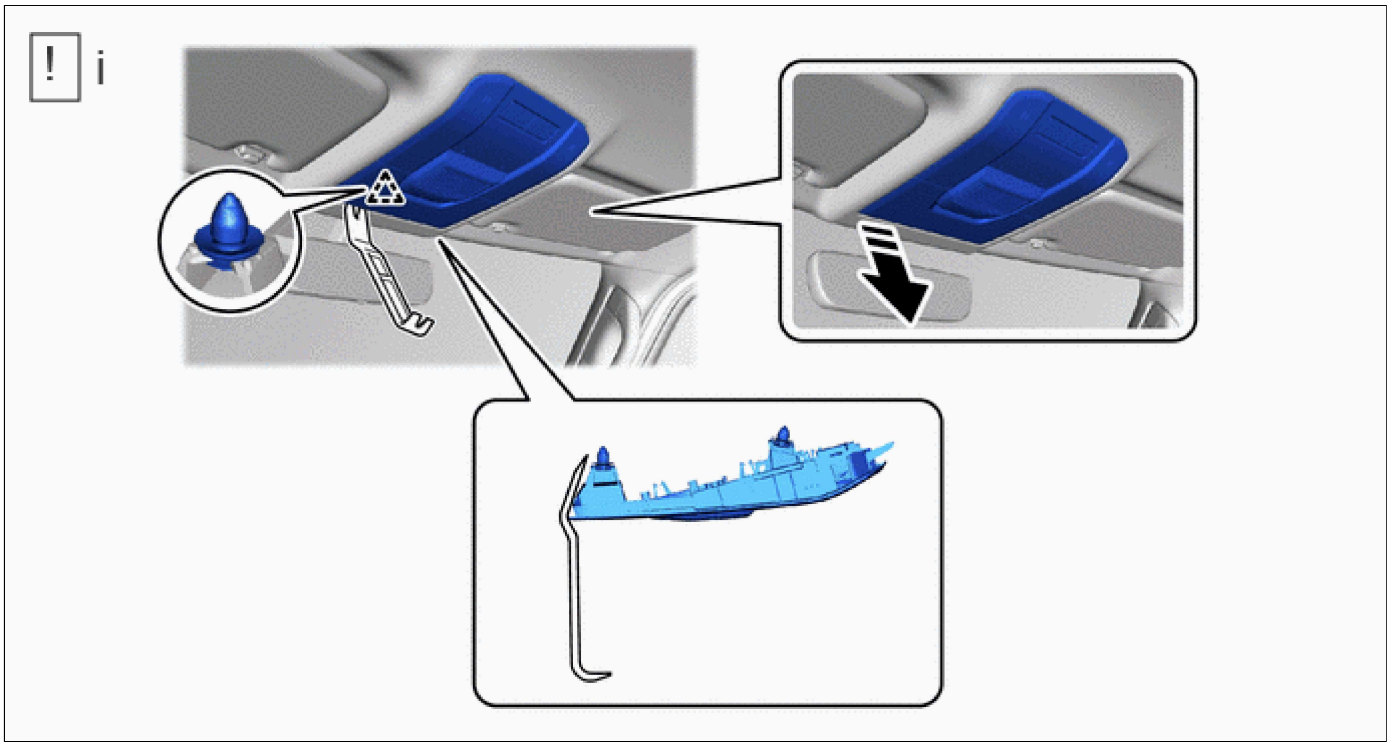
COMPONENTS (REMOVAL)



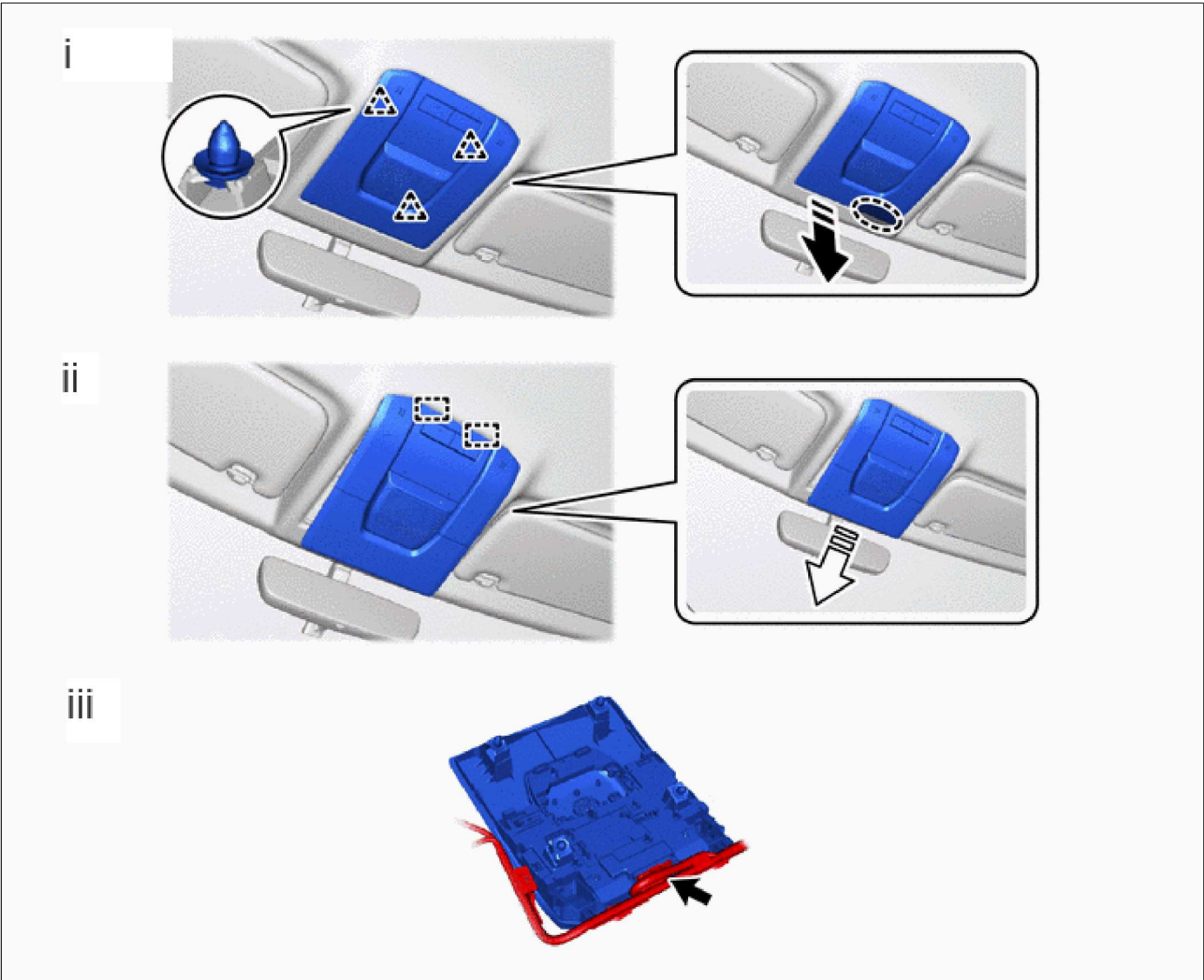
PROCEDURE		PART NAME CODE			
1	MAP LIGHT ASSEMBLY	81260A		-	-




PROCEDURE

1. REMOVE MAP LIGHT ASSEMBLY



(1) Using moulding remover B, detach the clip as shown in the illustration.



	Place Hands Here		Remove in this Direction (1)
	Remove in this Direction (2)	-	-

- (1) Place your hand as shown in the illustration, detach the clip.
- (2) Detach the guide and remove the map light assembly as shown in the illustration.
- (3) Disconnect the connector.

